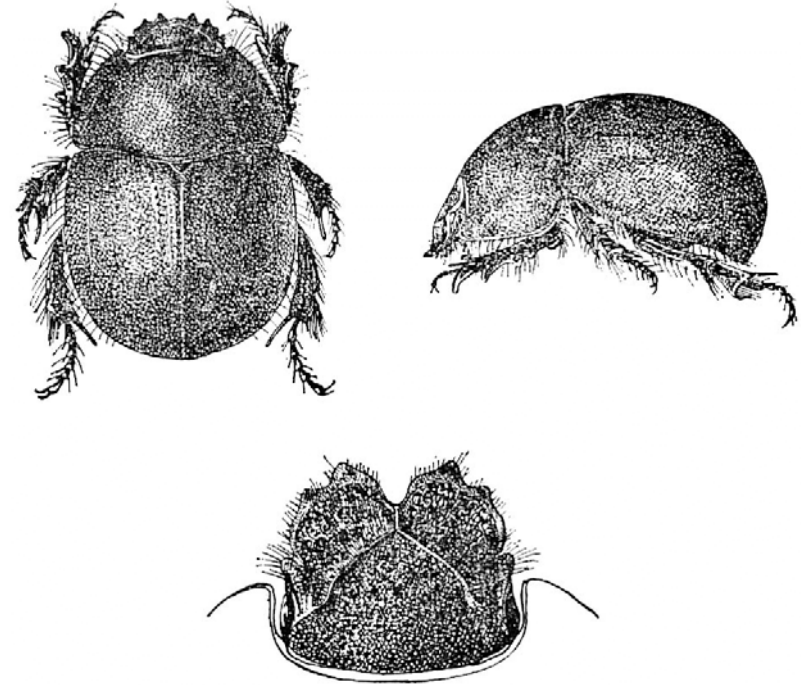


All Points Bulletin!

Be on the look-out for the following critter from southern Madagascar

Belohina inexpectata Paulian 1959
(Scarabaeoidea: Belohinidae)

Belohina inexpectata is the sole member of the family Belohinidae (Scarabaeoidea) and is endemic to southern Madagascar. Six type specimens were deposited at the Paris Museum (circa 1960). Despite efforts to locate specimens, none were found. Little is known of the biology of the species. Adults are 10-15 mm in length, dorsally convex, shining black, and flightless. The following combination of features characterize the taxon: labrum concealed, antenna 10-segmented with 3-segmented cupuliform club (last two segments telescoped into the first), clypeus deeply emarginate at the middle. The species is known only from southern Madagascar ("side of the road between Beloha and Tsihombe"). Specimens were collected in March 1957 after "very strong rains."



(illustration from Paulian 1979)

If you find information leading to apprehension of the above suspect, please contact Team Scarab at the University of Nebraska (mjameson1@unl.edu).